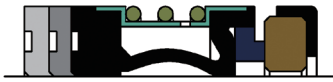




Mechanical Seals General Catalog

mechanical seals

YT 210/212/213/214/215



- Elastomer bellows single spring seals
- Unbalanced
- Independent on direction of rotation
- Positive bayonet drive
- Metric and imperial sizes available
- Shaft size 10 - 100 mm and 1/2 - 3"
- Various length available

YT 250



- Single coil spring pusher seals
- Unbalanced
- Independent on direction of rotation
- Positive bayonet drive
- Metric and imperial sizes available
- Shaft size 20 - 100 mm and 3/4 - 4"

YT 260/261



- Single coil spring pusher seals
- Unbalanced
- Independent on direction of rotation
- Positive screw drive
- YT260 with O-ring mounted
- YT261 with PTFE wedge seal ring
- Shaft size 16 - 100 mm

YT 301



- Elastomer bellows single spring seals
- Unbalanced
- Independent on direction of rotation
- Spring elcosed
- Short axial length
- Shaft size 8 - 70 mm

YT 305/306/315/316



- Single conical spring O-ring mounted seals
- Unbalanced
- Dependent on direction of rotation
- YT315/316 to DIN 24960
- Shaft size 10 - 100 mm
- Various length available

YT 307



- Wave spring seals
- Balanced
- Independent on direction of rotation
- Positive screw drive
- Short axial length
- Internal and external mounting allowed
- Shaft size 10 - 100 mm

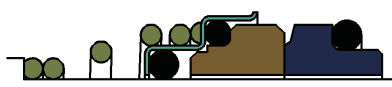
mechanical seals

YT 341/351/352



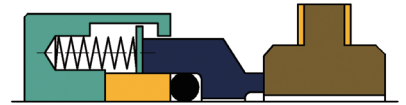
- Single conical spring O-ring mounted seals
- Unbalanced
- Dependent on direction of rotation
- YT351/352 to DIN 24960
- Shaft size 8 - 100 mm
- Various length available

YT 355/365/366



- Single conical spring O-ring mounted seals
- Unbalanced
- Dependent on direction of rotation
- YT315/316 to DIN 24960
- Shaft size 10 - 40 mm
- Various length available

YT 466



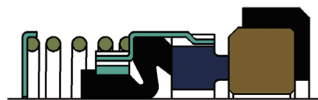
- Multiple springs O-ring mounted seals
- Balanced
- Independent on direction of rotation
- Externally mounted
- Metric and imperial sizes available
- Shaft size 18 - 100 mm and 3/4 - 4"

YT 524



- Single coil spring pusher seals
- Unbalanced
- Independent on direction of rotation
- Positive bayonet drive
- To DIN 24960
- Shaft size 30 - 100 mm

YT 560



- Elastomer diaphragm single spring seals
- Unbalanced
- Independent on direction of rotation
- Shaft size 10 - 50 mm

YT 562



- Elastomer diaphragm single spring double seals
- Unbalanced
- Independent on direction of rotation
- Shaft size 15 - 45 mm
- Various length available

mechanical seals

YT 610/612/613/614



- Elastomer bellows single spring seals
- Unbalanced
- Independent on direction of rotation
- Shaft size 10 - 100 mm
- Various length available

YT 615/616/617/618



- Elastomer bellows single spring seals
- Thin profile
- Unbalanced
- Independent on direction of rotation
- Metric and imperial sizes available
- Shaft size 10 - 75 mm and 5/8 - 3"

YT 620



- Single conical spring O-ring mounted seals
- Unbalanced
- Dependent on direction of rotation
- Monolithic carbon face
- Shaft size 10 - 38 mm

YT 630/632/638



- Single conical spring O-ring mounted seals
- Unbalanced
- Dependent on direction of rotation
- Shaft size 10 - 80 mm
- YT630 (stainless steel face), YT632 (carbon face), YT638 (carbide face)

YT 642/647



- Single conical spring O-ring mounted seals
- Balanced
- Dependent on direction of rotation
- Shaft size 10 - 80 mm
- YT642 (carbon face), YT647 (carbide face)

YT 655/656/657/658



- Single coil spring pusher seals
- Unbalanced
- Independent on direction of rotation
- Various operating length and spring adaptors available
- Metric and imperial sizes available
- Shaft size 16 - 100 mm and 5/8 - 4"

mechanical seals

YT 670/674



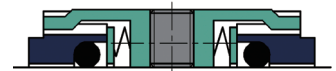
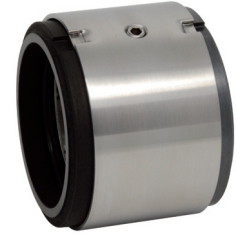
- Single seals
- Unbalanced
- Independent on direction of rotation
- YT670 with wave spring
- YT674 with multiple springs
- Shaft size 14 - 100 mm

YT 675/677



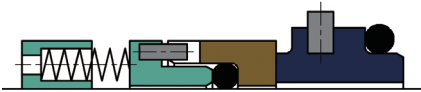
- Single seals
- Balanced
- Independent on direction of rotation
- YT677 with wave spring
- YT675 with multiple springs
- Shaft size 14 - 100 mm

YT 678



- Multiple springs double seals
- Unbalanced
- Independent on direction of rotation
- Shaft size 14 - 100 mm

YT 683/684



- Multiple springs pusher seals
- Unbalanced
- Independent on direction of rotation
- Metric and imperial sizes available
- Shaft size 20 - 100 mm and 1 - 4 1/2"

YT 690



- Multiple springs single seals
- Balanced
- Independent on direction of rotation
- Metric and imperial sizes available
- Shaft size 18 - 100 mm and 3/4 - 4"

YT 692/697



- Wave spring single seals
- Balanced
- Independent on direction of rotation
- Shaft size 18 - 100 mm

mechanical seals

YT 801



- Elastomer diaphragm single spring seals
- Unbalanced
- Independent on direction of rotation
- Metric and imperial sizes available
- Shaft size 12 - 100 mm and 1/2 - 4"
- Various spring adaptors available

YT 802/803



- Elastomer diaphragm single spring seals
- Unbalanced
- Independent on direction of rotation
- Metric and imperial sizes available
- Shaft size 12 - 120 mm and 1/2 - 4 3/4"

YT 805



- Elastomer diaphragm single spring seals
- Unbalanced
- Independent on direction of rotation
- Machined head version of YT801
- Shaft size 12 - 100 mm and 1/2 - 4"
- Various spring adaptors available

YT 813



- Elastomer diaphragm single spring seals
- Balanced
- Independent on direction of rotation
- Machined head
- Shaft size 1 - 4"

YT 814



- Elastomer diaphragm single spring seals
- Balanced
- Independent on direction of rotation
- Shaft size 1 - 4"

YT 820/821/824



- Elastomer diaphragm single spring seals
- Unbalanced
- Independent on direction of rotation
- Various operating length available
- YT821 to US custom dimensions
- YT824 to DIN 24960
- Shaft size 10 - 100 mm and 3/8 - 4"

mechanical seals

YT 828



- Elastomer diaphragm double seals
- Unbalanced
- Independent on direction of rotation
- Shaft size 1 - 3 1/4"

YT 843



- Elastomer diaphragm single spring seals
- Thin profile
- Independent on direction of rotation
- Metric and imperial sizes available
- Various operating length available
- Shaft size 10 - 75 mm and 3/8 - 3"

YT 852



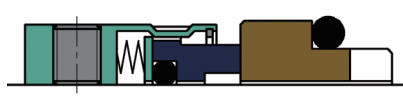
- Elastomer diaphragm single spring seals
- Unbalanced
- Independent on direction of rotation
- To DIN 24960
- Shaft size 14 - 100 mm

YT 853/854



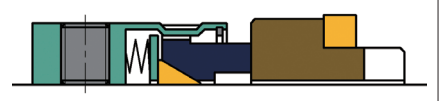
- Multiple springs non-pusher PTFE seal
- Unbalanced
- PTFE bellows
- Independent on direction of rotation
- Externally mounted
- Metric and imperial sizes available
- Shaft size 19 - 75 mm and 3/4 - 3"

YT 858/874/878



- Multiple springs O-ring mounted seals
- Unbalanced
- Independent on direction of rotation
- YT858 in metric sizes
- YT874/878 in imperial sizes
- YT878 with thin profile
- Shaft size 14 - 100 mm and 1/2 - 4"

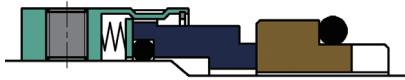
YT 859/871/875/879



- Multiple springs PTFE wedge seals
- Unbalanced
- Independent on direction of rotation
- YT859 in metric sizes
- YT871/875/879 in imperial sizes
- YT879 with thin profile
- Shaft size 14 - 100 mm and 1/2 - 4"

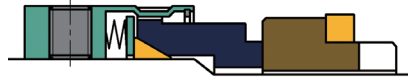
mechanical seals

YT 858B/874B/878B



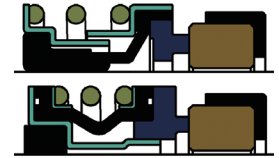
- Multiple springs O-ring mounted seals
- Balanced
- Independent on direction of rotation
- YT858B in metric sizes
- YT874B/878B in imperial sizes
- YT878B with thin profile
- Shaft size 14 - 100 mm and 5/8 - 4"

YT 859B/875B/879B



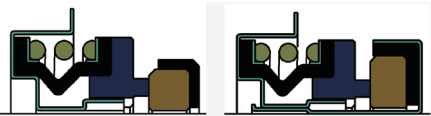
- Multiple springs PTFE wedge seals
- Balanced
- Independent on direction of rotation
- YT859B in metric sizes
- YT875B/879B in imperial sizes
- YT879B with thin profile
- Shaft size 14 - 100 mm and 5/8 - 4"

YT 816/860



- Elastomer diaphragm single spring seals
- Unbalanced
- Independent on direction of rotation
- Shaft size 1/2 - 1"

YT 866/867



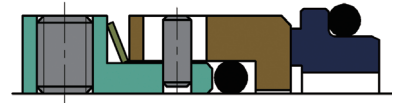
- Elastomer diaphragm single spring seals
- Unbalanced
- Independent on direction of rotation
- Shaft size 1/2 - 1"

YT 881/882/883



- Multiple springs seals
- Unbalanced
- Independent on direction of rotation
- No shaft fretting
- Metric and imperial sizes available
- Various operating length
- Shaft size 18 - 100 mm and 3/4 - 4"

YT 884



- Wave spring seals
- Unbalanced
- Independent on direction of rotation
- Metric and imperial sizes available
- Shaft size 16 - 150 mm and 5/8 - 3"

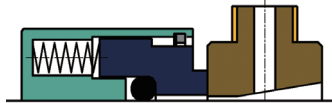
mechanical seals

YT 885



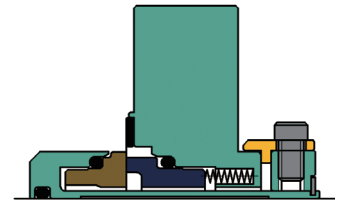
- Wave spring seals
- Unbalanced
- Independent on direction of rotation
- Positive screw drive
- Shaft size 20 - 100 mm

YT 886



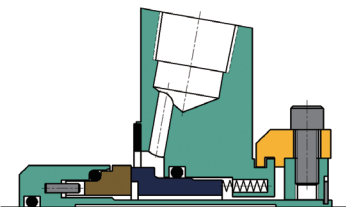
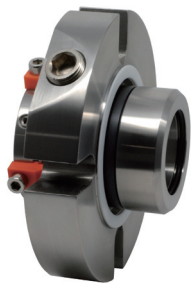
- Multiple springs O-ring mounted seals
- Independent on direction of rotation
- Shaft size 1 - 2 7/8"

YT 908



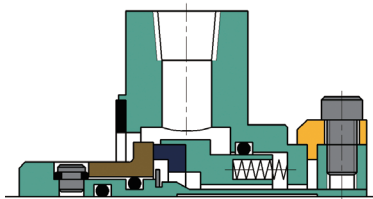
- Single cartridge seals
- Balanced
- Stationary multiple springs design
- Springs isolated from media
- Floating faces
- Metric and imperial sizes available
- Shaft size 24 - 100 mm and 1 - 4"

YT 910



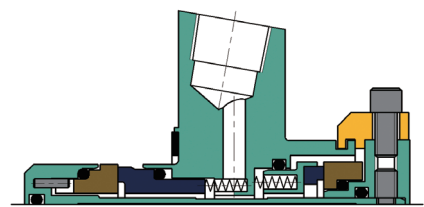
- Single cartridge seals
- Balanced
- Stationary multiple springs design
- Springs isolated from media
- Quench ports available upon request
- Metric and imperial sizes available
- Shaft size 25 - 100 mm and 1 - 4"

YT 912



- Single cartridge seals
- Balanced
- Stationary multiple springs design
- Springs isolated from media
- Floating faces
- Quench ports available upon request
- Shaft size 1 - 4"

YT 920



- Dual cartridge seals
- Double balanced
- Stationary multiple springs design
- Springs isolated from media
- Floating faces
- Metric and imperial sizes available
- Shaft size 25 - 100 mm and 1 - 4"

mechanical seals

YT 701



- Stationary multiple springs seals
- Machined rugged housing
- Wave spring version available
- Shaft sizes 1.750", 2.125", 2.500", 3.000"

YT 702



- Stationary wave spring seals
- To suit Stokes® vacuum pumps
- Shaft sizes 1.187", 1.750", 2.250"
- Stationary face in carbon, rotary ring in cast steel, O-rings in FKM

YT 703



- Elastomer diaphragm seals
- To suit Gorman Rupp® T-series pumps
- Shaft sizes 1.250", 1.500", 2.250"
- Faces in SiC or TC, metal parts in AISI 316, O-rings in FKM

YT 706



- To suit Grundfos® pumps
- Cartridge seal sizes 12, 16, 22 mm
- Component seal sizes 12, 16 mm
- Faces in SiC or TC, O-rings in FKM

YT 710



- To suit Fristam® pumps
- Wide range of rotary and stationary types and configurations
- Shaft sizes 22, 30, 35 mm

YT 723



- Elastomer bellows single spring seals
- To suit KSB® pumps
- Shaft sizes 22, 28, 38, 48 mm

YT 731



- Single spring O-ring mounted seals
- To suit APV Puma® pumps
- Shaft sizes 1.000", 1.500"
- Rotary face in carbon, stationary face in stainless steel

YT 737



- Conical spring diaphragm seals
- To suit APV® and Rosista® pumps
- Shaft sizes 20, 25, 30, 35 mm

YT 741/743



- Conical spring O-ring mounted seals
- To suit APV® W pumps
- Single seals YT741
- Double seals YT743
- Shaft sizes 25, 35 mm

mechanical seals

YT 750



- Single spring O-ring mounted seals
- To suit Alfa Laval Contherm® heat exchangers
- Shaft sizes 1.500 / 2.000"

YT 751/752/753/754



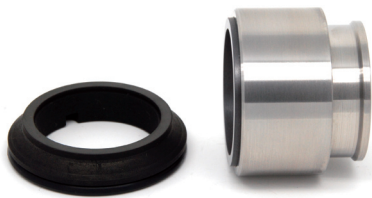
- Single spring O-ring mounted seals
- To suit Alfa Laval® pumps
- Shaft sizes 22, 27, 31.7 mm
- Rotary face in carbon, stationary face in stainless steel or SiC

YT 761



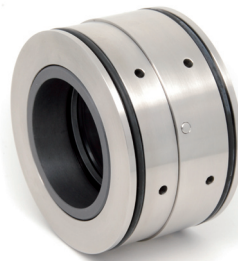
- Multiple springs stationary seals
- To suit Inoxpa Prolac® pumps
- Shaft sizes 0.625", 1.000", 1.500"

YT 762



- Multiple springs seals
- To suit Hilge® pumps
- Shaft sizes 28, 38 mm

YT 763



- To suit EMU® pumps
- Shaft sizes 35, 50, 75 mm
- Double face kits available as YT763KIT

YT 765



- Single spring seals
- To suit Tuchenhagen® pumps
- Shaft sizes 12, 18, 21, 28, 40 mm
- Rotary ring face in SiC, stationary seal face in carbon

YT 767



- Wave spring O-ring mounted seals
- To suit ABS® pumps
- Shaft sizes 48, 65 mm

YT 781



- Single spring O-ring mounted seals
- To suit Viking® pumps
- Shaft sizes 1.125", 1.437"

YT 783



- Single spring O-ring mounted seals
- To suit Tri-clover® pumps
- Shaft sizes 0.750", 1.125", 1.500"
- Spring adaptors available separately



PRESENTED BY

